

PhilaPort Auto Complex

The U.S. East Coast Premier Auto Complex



PhilaPort
THE PORT OF PHILADELPHIA



PhilaPort Auto Complex

Southport Auto Terminal

Pier 98 Annex Auto Facility





Southport Auto Terminal

- Only East Coast port auto terminal above the 100-year floodplain
- Fully equipped 108,000-square-foot VPC capable of handling 1,000+ cars daily for distribution across the U.S.
- The 155-acre terminal includes:
 - 24,000 parking stalls
 - Capable of accommodating 350,000 cars a year
- Terminal layout optimizes efficiency by minimizing the distance from ship to parking space
- Direct access to highways
 - I-95 & I-76
- Served by 2 Class I Railroads
 - CSX & NS





98 Annex Auto Facility

- Capable of processing 700+ cars per day
- The 85-acre facility includes:
 - 15,000 sq. ft. Auto-Washing Shed
 - 80,000 sq. ft. Service Building and
 - Accessory Shop capable of accommodating 125 vehicles
- Immediate access to:
 - Packer Avenue Marine Terminal
 - Southport Auto Terminal
- Designated Foreign-Trade Zone
- Direct access to highways
 - I-95 & I-76
- Served by 2 Class I Railroads
 - CSX & NS





Served by 2
Class I Railroads



PhilaPort Auto Complex & Rail Proximity

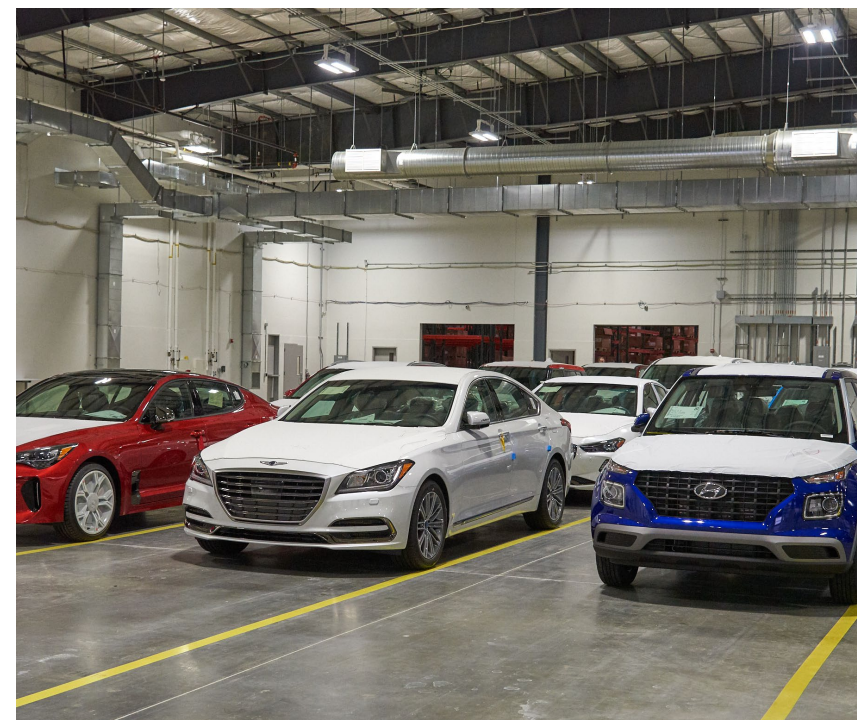
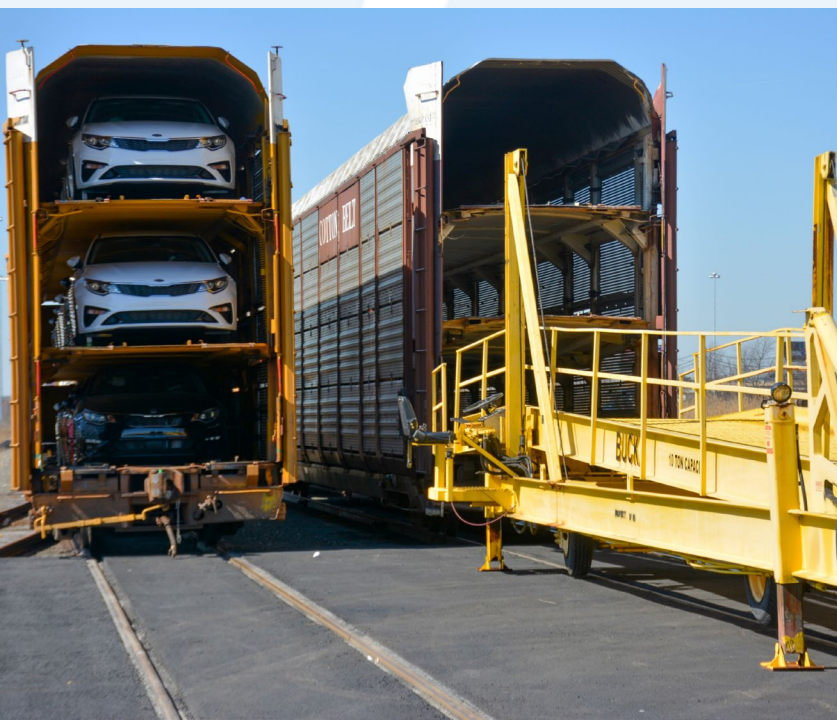
- **PhilaPort Auto Complex**

1. Southport Auto Terminal
2. Pier 98 Annex – Auto Facility
3. Pier 122
4. Packer Avenue Marine Terminal

- **Rail Connections**

5. CSX Intermodal Yard
6. Norfolk Southern Yard







Coming soon!

New Ro/Ro berth at Southport Auto Terminal*

*PhilaPort auto Complex Total Ro/Ro Berths: 3



Thank You!



PhilaPort
THE PORT OF PHILADELPHIA

✓ Velocity ✓ Proximity ✓ Flexibility

www.philaport.com



For more information:

Joe Fox, Marketing Manager
jfox@philaport.com

✓ Velocity ✓ Proximity ✓ Flexibility

www.philaport.com