

Cleaner operations. Healthier communities.

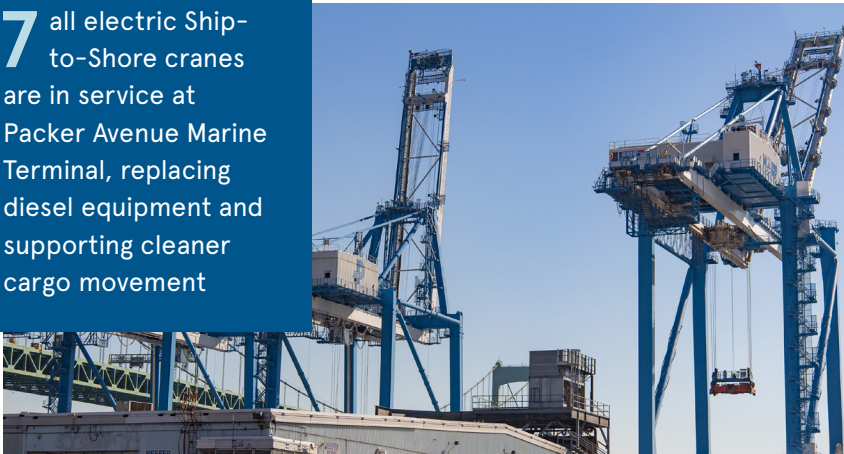
PhilaPort’s vision is to be a leading maritime hub recognized for innovation, safety, and sustainability. Through strategic investment and collaboration, the Port and its tenant partners are modernizing operations and embracing cleaner, more efficient technologies that benefit port workers, nearby neighborhoods, and the region.

As part of this commitment, PhilaPort is transitioning its equipment to zero- and low-emission technology, reducing emissions, improving air quality, and strengthening long-term operational performance.

Modern Equipment, Real Progress

PhilaPort is already making measurable progress across its terminals:

7 all electric Ship-to-Shore cranes are in service at Packer Avenue Marine Terminal, replacing diesel equipment and supporting cleaner cargo movement

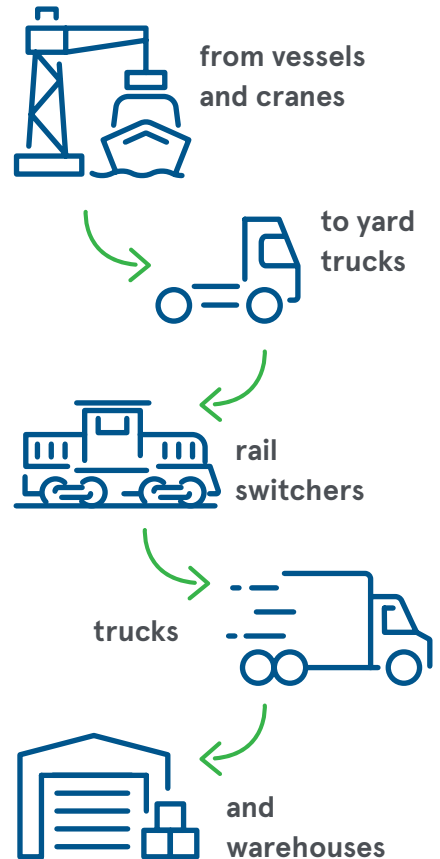


4 electric terminal tractors are now operating at Tioga Marine Terminal, helping move cargo more efficiently with zero tailpipe emissions



Zero Emission Chain of Operations

Port operations rely on a connected chain

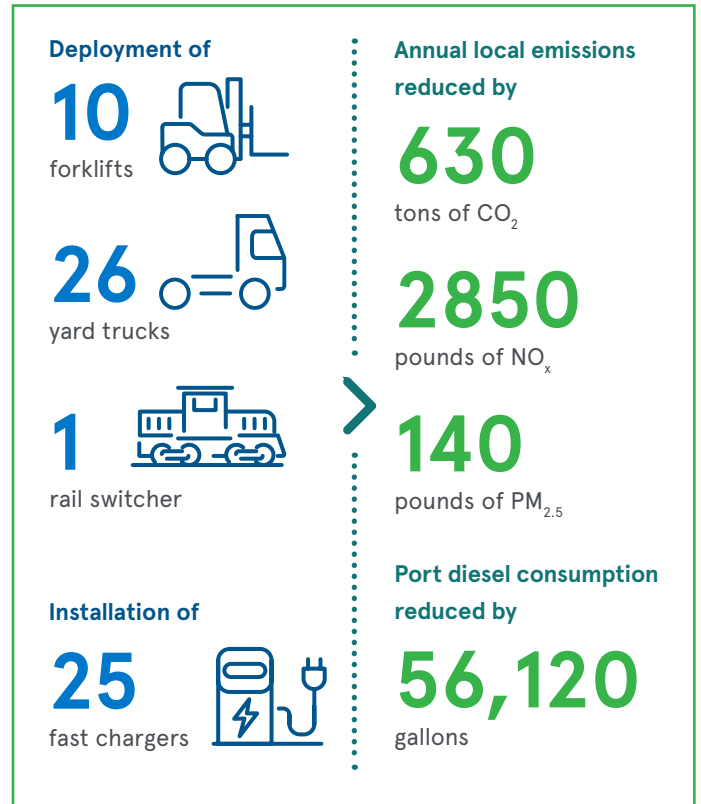
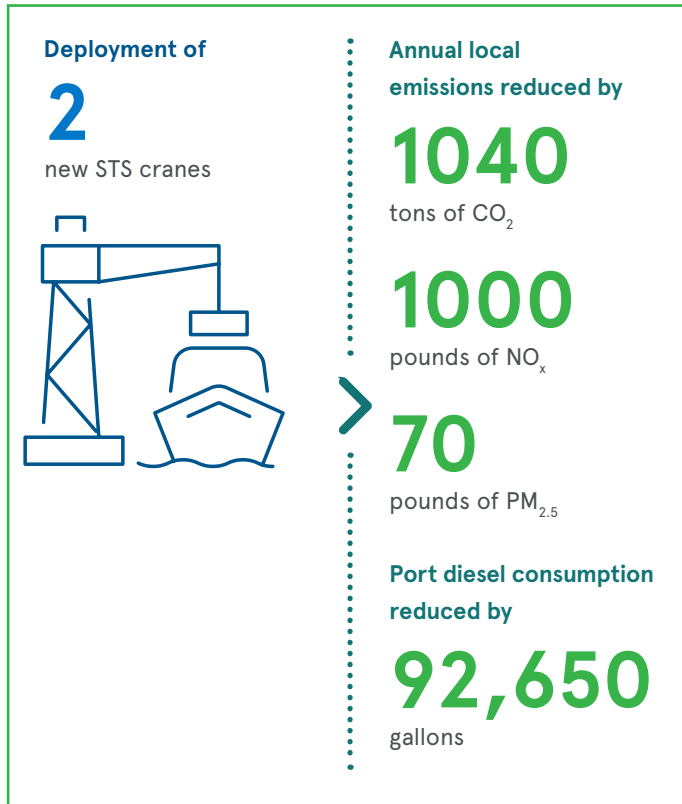


Historically, much of this equipment has been diesel-powered. As equipment reaches the end of its useful life, PhilaPort is replacing it with zero-emission alternatives, supported by federal and state funding.

By modernizing its equipment across this operations chain, PhilaPort is reducing emissions to improve air quality for its workers and neighbors.

Investing in a Cleaner Future

PhilaPort has received **\$77.9M** in grant awards from **US EPA's Clean Ports Program** and **PA DEP's Driving PA Forward** to purchase **78 new zero-emission equipment units** and develop a comprehensive zero emissions strategy. The plan will baseline current emissions, prioritize equipment replacement, and identify the infrastructure and workforce development needed for transitioning to zero-emission equipment. As new equipment is deployed, PhilaPort will track progress toward the zero-emission goal for a cleaner, more sustainable future. Projects are expected to be complete by January 2029.



PhilaPort's Clean Course

NAVIGATING TO ZERO EMISSIONS.

PhilaPort's zero-emissions planning effort supports a thoughtful, phased transition that balances environmental responsibility with operational needs. Key components include:

ESTABLISH

a **port-wide emissions baseline** from vessels through port-owned inland warehouse facilities

DEVELOP

a **long-term zero-emission equipment and infrastructure strategy**, complete with benchmarking and milestones

IDENTIFY

infrastructure needs and spatial opportunities to support future equipment and charging capacity

ENGAGE

community members, stakeholders, environmental groups, terminal tenants, and local/regional agencies throughout the process

CONDUCT

a port **workforce gap assessment** and develop strategies to support worker retention, training, and career pathways

Together, these efforts position PhilaPort to operate more cleanly, responsibly, and competitively—today and well into the future.